

What this Plat Cannot Show

THIS plat is a diagram, a map of Harrison Hill. It shows how the streets will be laid out; the pink shows where the paving will be laid; the dark green shows where the parks, parkways, public and private playgrounds will be; and it shows the sizes and prices of the lots. The prices shown are subject to a ten per cent. discount until July fifteenth.

BUT—
This plat does not show the beauties of Harrison Hill any more than the map of the United States can show the grandeur of the Grand Canyon, the picturesque beauty of the Yosemite Valley or the wonders of Yellowstone Park.

These are things that cannot be shown on a map, things that cannot be even pictured right. To see the beauties of Harrison Hill, its wide boulevards and drives, its broad green parkways, its playgrounds filled with safe, happy children, and its scores of comfortable homes—

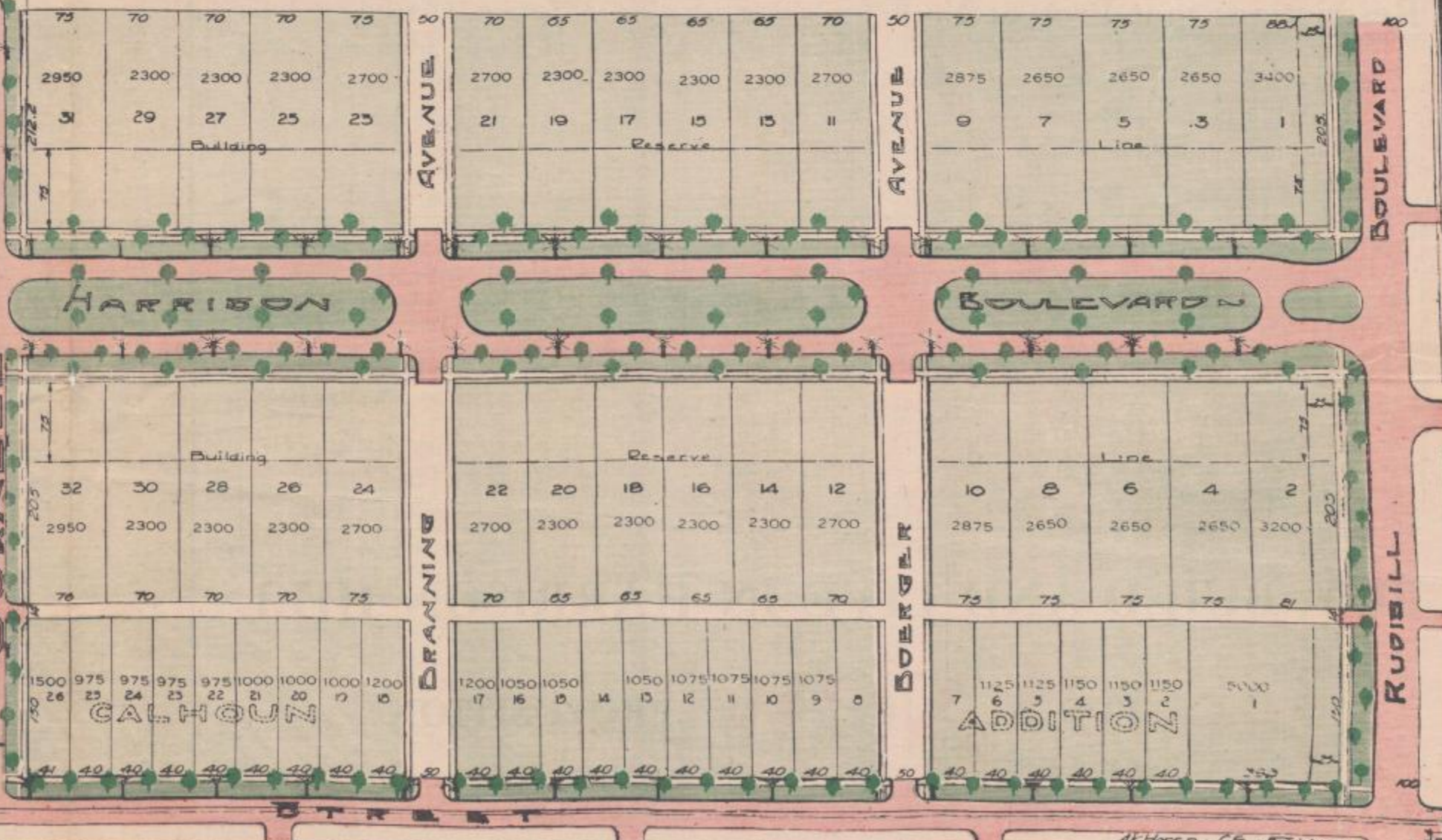
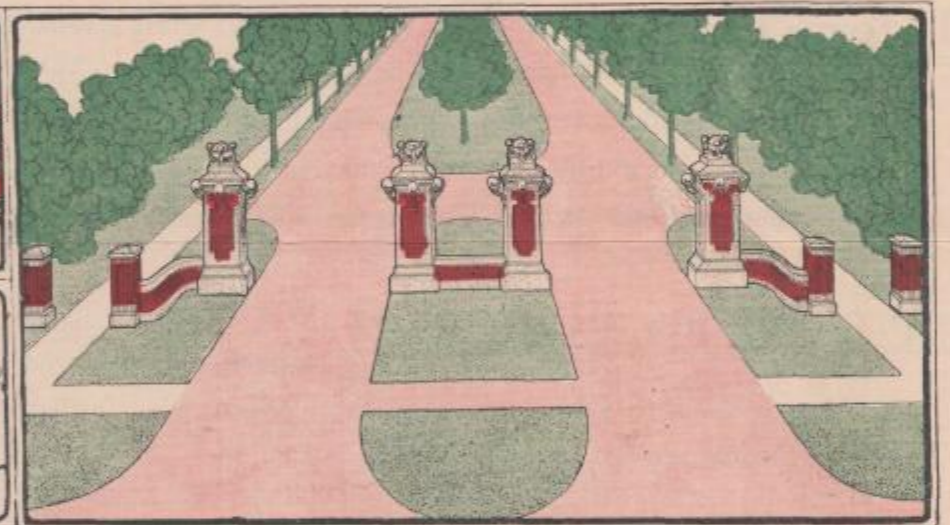
To see all this you must use your imagination; and to help you there you should see Harrison Hill as it is now, in its unfinished state, and then see Arcadia Court, Oakwood and Oakdale, finished products of Hilgeman and Schaaf, and Englewood, which is almost finished.

Then you can imagine what Harrison Hill will be when it is fully completed.

HARRISON HILL

ADDITION

FORT WAYNE - INDIANA



FEATURES

THAT DISTINGUISH

HARRISON HILL

Convenient Location Harrison Hill is the heart of the NEW South Wayne. Due south on Calhoun street, the principal thoroughfare of the city; fifteen minutes ride on the car line which goes direct to Harrison Hill. Just two blocks from the New South Side School site. Fronts on the north on Rudisill Boulevard, part of the "around the city boulevard system."

High Ground Standing on Harrison Hill you can look over the city to the north and over the rolling country to the south. Harrison Hill is 35 to 50 feet above the level of the sidewalk around the court house.

Modern Platting Harrison Hill is platted along twentieth century lines, taking into account modern conditions of life. The streets are planned for motor traffic rather than horse drawn vehicles, with wide, sweeping curves and long distances between cross streets. The lots are planned for the kind of homes we build today with sufficient variety in size to take care of various sized houses. There is more space devoted to playgrounds and parks in Harrison Hill than in any other addition in the city.

Improvements all Installed Work on these improvements is now in progress. They include asphaltic concrete paving, concrete sidewalks, ornamental lighting system, trees, shrubbery and ornamental entrances; all these besides the absolutely necessary improvements such as sewers, water, gas, etc.

Restrictions that Protect You The building restrictions on Harrison Hill are the kind that bring the right kind of people into the neighborhood, folks you will like to have live near you. There will be no "cheap" houses in Harrison Hill; every house will be a HOME in the best sense of the word, and the owners will be people that CARE, people that will keep their homes up. You will be proud to say, "I live in Harrison Hill."

WHAT gives value to city home property? People, nothing in the world but people. Without people city property would be worth nothing.

What brings people to city property? Improvements, nothing in the world but improvements. Without sewers, water, lights, walks, etc., city property would not be livable.

What increases the value of city property above the ordinary values?

Restrictions, nothing in the world but restrictions. For restrictions bring the right kind of people to the neighbor-

hood; it is restrictions that mark the difference between South Wayne and the Rolling Mill district.

Harrison Hill will have them all. Harrison Hill will have all improvements, so that people CAN live there; Harrison Hill will be restricted so that the best people WILL live there.

Real proof is the fact that at this date, July 1st, 1915, six houses are already started in Harrison Hill.

Buy where people live, where the right kind of people live, and you are getting home property of real value, of constantly increasing value.

BUY, BUILD AND LIVE IN HARRISON HILL

IT'S A **NOW** PROPOSITION

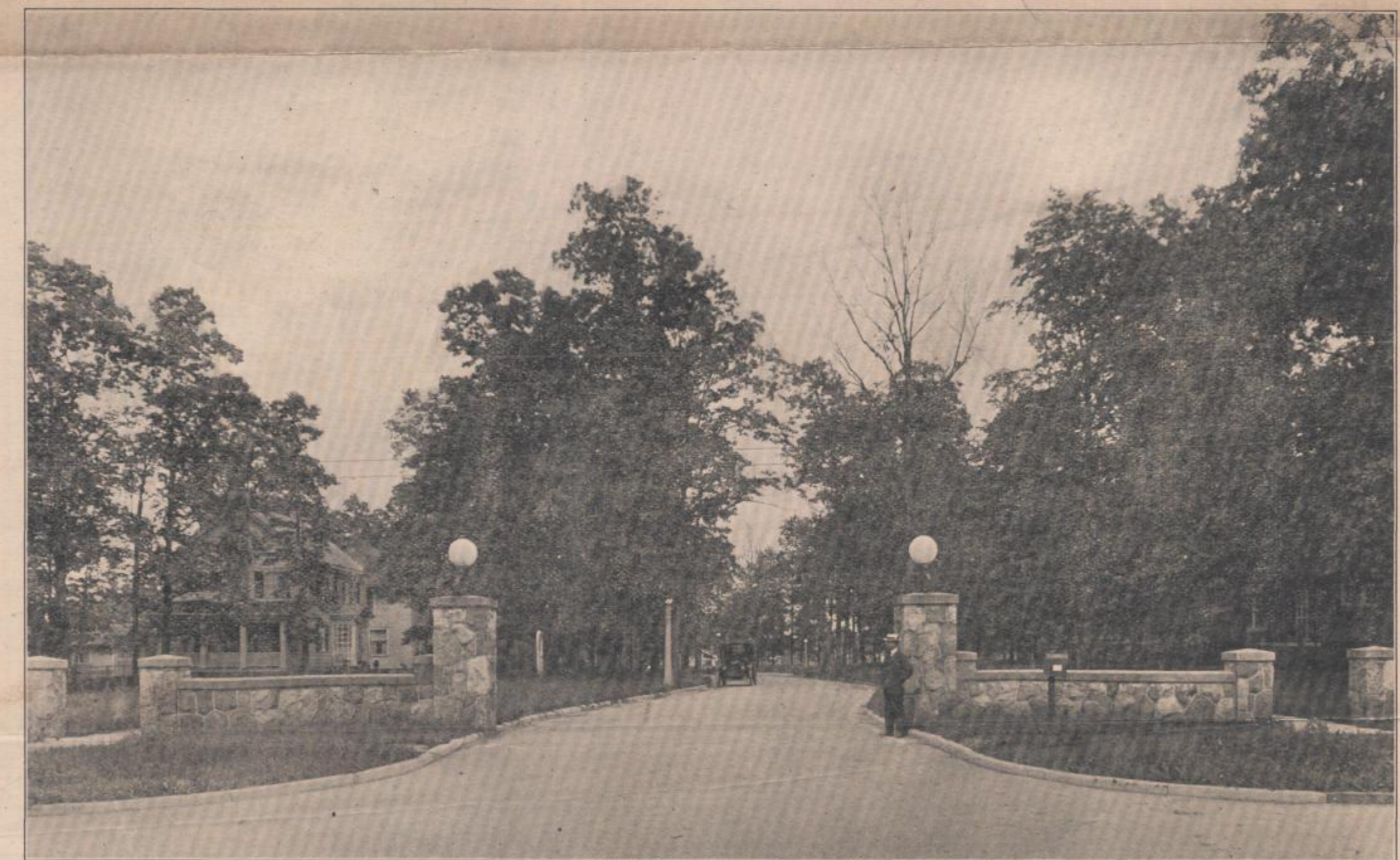
1915?

Harrison Hill

"The Heart of New South Wayne"



Harrison Hill in the Making—The Steam Shovel at Work on Harrison Blvd.



FINISHED!

Entrance to Arcadia Court, the First Creation of

Hilgeman & Schaaf

4 North American Bldg.

Phone 606

Fort Wayne, Indiana