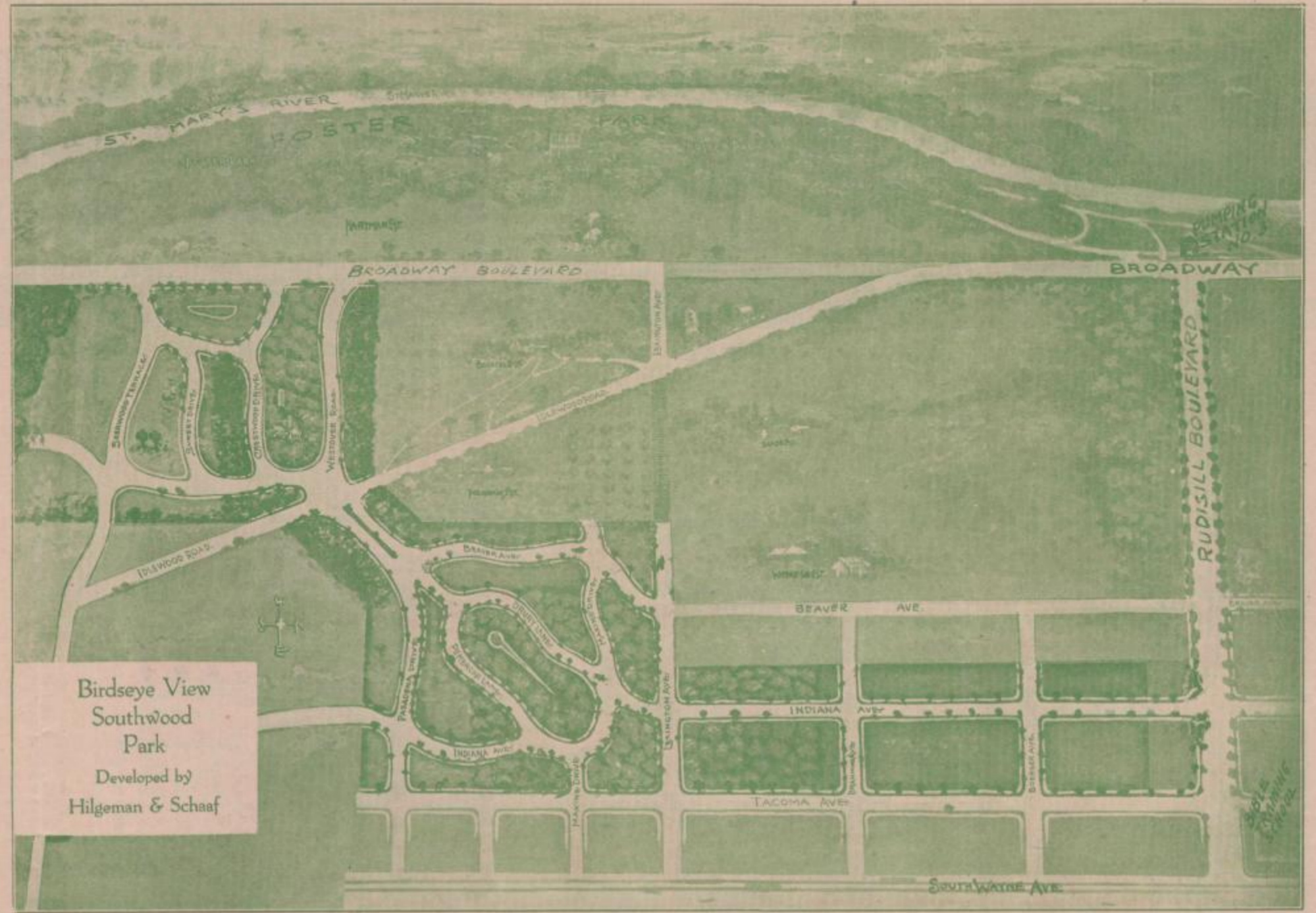


RUDISILL BLVD. ENTRANCE TO SOUTHWOOD PARK



BIRDSEYE VIEW OF SOUTHWOOD PARK, LOOKING WEST FROM FAIRFIELD AVE.



INDEX TO  
 Curb  
 Paving  
 Light  
 Gas  
 Water  
 E. In

# SOUTHWOOD PARK

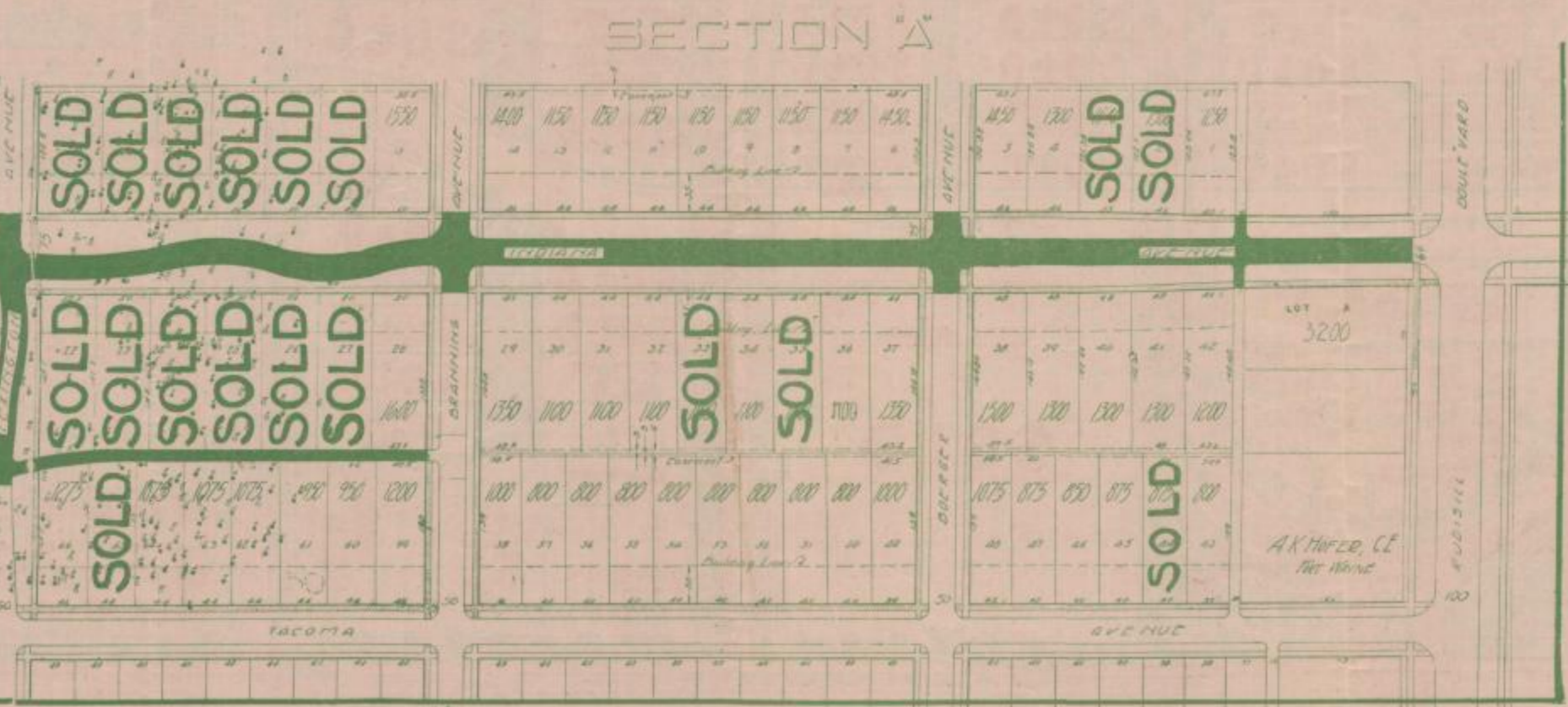
## HILGEMAN & SCHAAF

PHONE 606

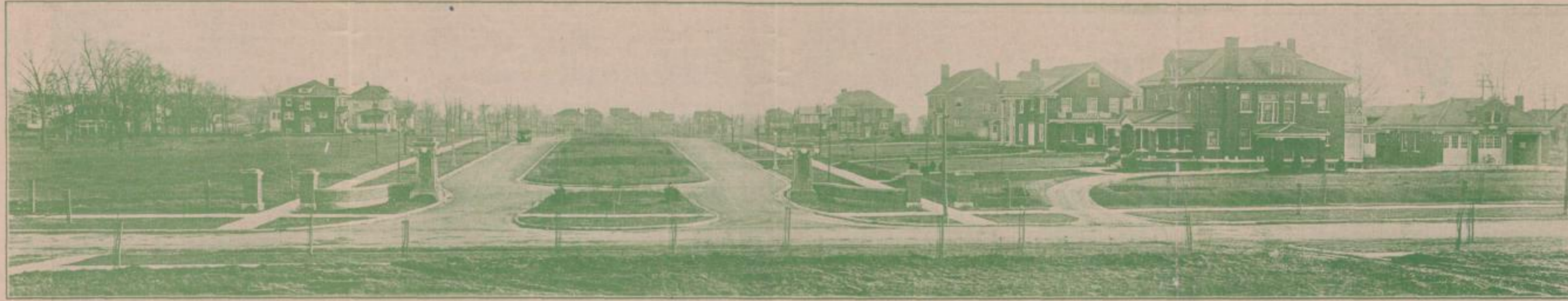
346-347 UTILITY BLDG.

SALESMEN

- W. H. North
- A. L. Kapp
- Carl Getz
- Chester Hosier
- F. W. Miles



SECTION A



RUDISILL BLVD. ENTRANCE TO HARRISON HILL

1918

# Southwood Park

Developed by  
Hilgeman & Schaaf

# Harrison Hill

Developed by  
Hilgeman & Schaaf

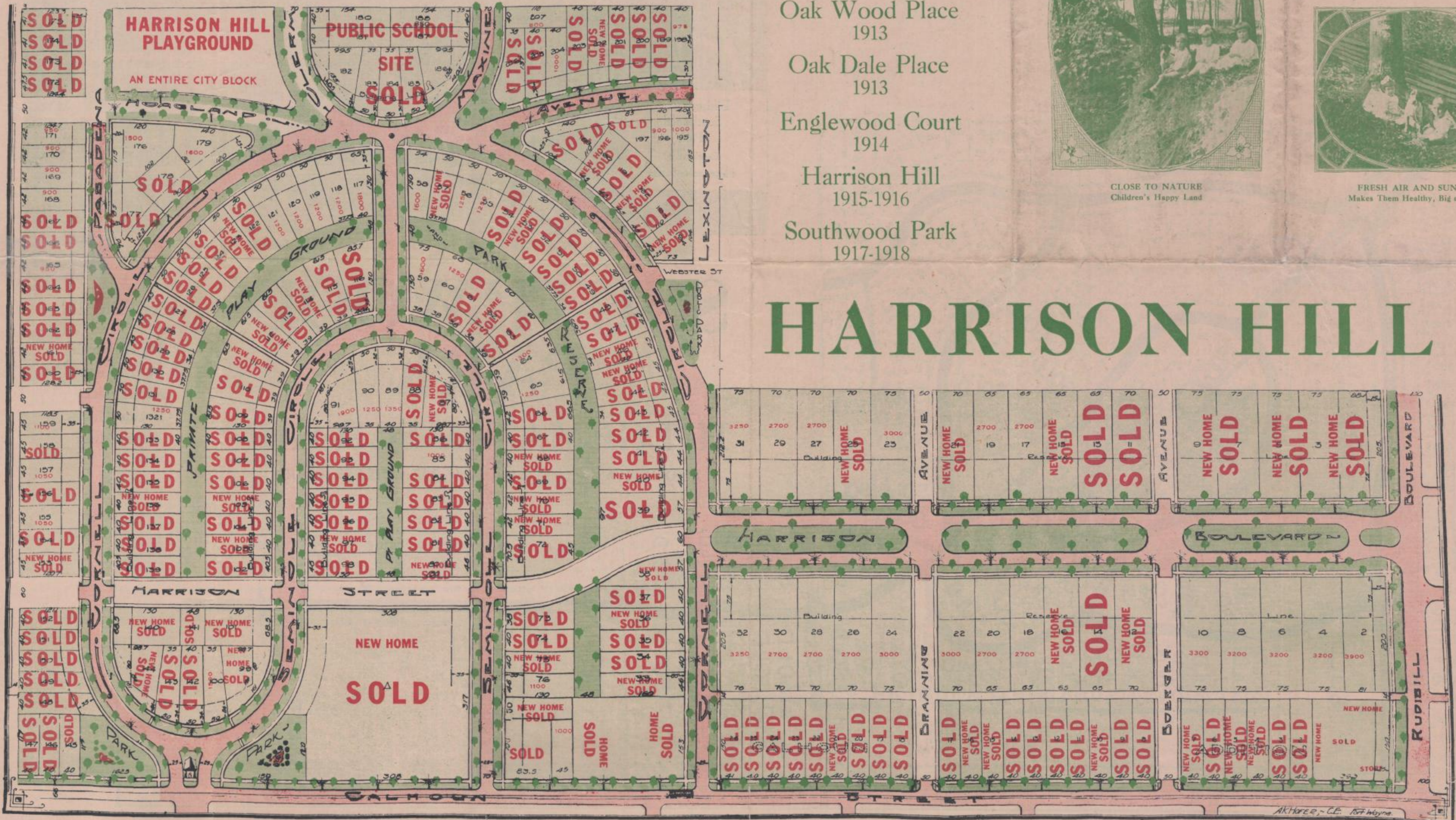
- Arcadia Court 1912
- Oak Wood Place 1913
- Oak Dale Place 1913
- Englewood Court 1914
- Harrison Hill 1915-1916
- Southwood Park 1917-1918



CLOSE TO NATURE  
Children's Happy Land



FRESH AIR AND SUNSHINE  
Makes Them Healthy, Big and Strong



# HARRISON HILL