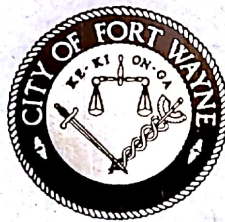


# FORT WAYNE



## INTERIM REPORT INDIANA HISTORIC SITES AND STRUCTURES INVENTORY

## Acknowledgments

### Indiana Department of Natural Resources

Patrick R. Ralston, Director,  
Department of Natural Resources and  
State Historic Preservation Officer

Daniel Fogerty, Director  
Division of Historic Preservation and Archaeology

Frank D. Hurdis, Jr.,  
Chief of Registration and Survey,  
Division of Historic Preservation and Archaeology

Jon Smith, Grants Manager,  
Division of Historic Preservation and Archaeology

### City of Fort Wayne

Paul Helmke, Mayor

W. Gregg Lamar, Director,  
Community and Economic Development

Gary Stair, Director  
City Planning

### Fort Wayne Historic Preservation Review Board

Pam Schmidt, Chair  
Larry Wardlaw, Vice-Chair  
Karen Anderson  
Bill Decker  
Bernie Gump  
Dick Stumpf, AIA  
Gretchen Wiegel

Former HPRB members: Vic Martin, Michael  
Hawfield, Beth Palmer, Janet Bell, Jody Hemphill-  
Smith, Alan Grinsfelder AIA, Esther Klinkenberg,  
Stephen Irmscher.

## Credits

Donald A. Orban, Historic Preservation Planner  
(Surveyor 1986-1991, Director 1991-present))

Creager Smith, Assistant Preservation Planner  
(Survey Coordinator 1992-present)

Richard LaRowe, Historic Preservation Planner  
(Director 1985-1991)

Phyllis Brockmyer, Surveyor

Shane Schneck, Intern  
Pam LaRue, Intern

Sarah McNair Vosmeier, Research Assistant  
David Faulkner, Research Assistant

Maps produced by Fort Wayne Planning/GIS  
Department: Scott Cassingham, Rick Kunkle

## Special Thanks

In addition to those individuals and offices directly involved with the survey and its publication, many others provided valuable time, knowledge, and assistance on this project. Among those especially helpful were Laura Thayer, Historic Preservation Consultant; Camille Fife and Thomas Salmon - The Westerly Group; Michael Hawfield; Lori Sparks; Dave Camperman; Steven Purdy; Allen County-Fort Wayne Historical Society; and ARCH, Inc., its volunteers and members.

We would also like to express our appreciation to all the people we met while surveying who generously shared information and background on their properties.

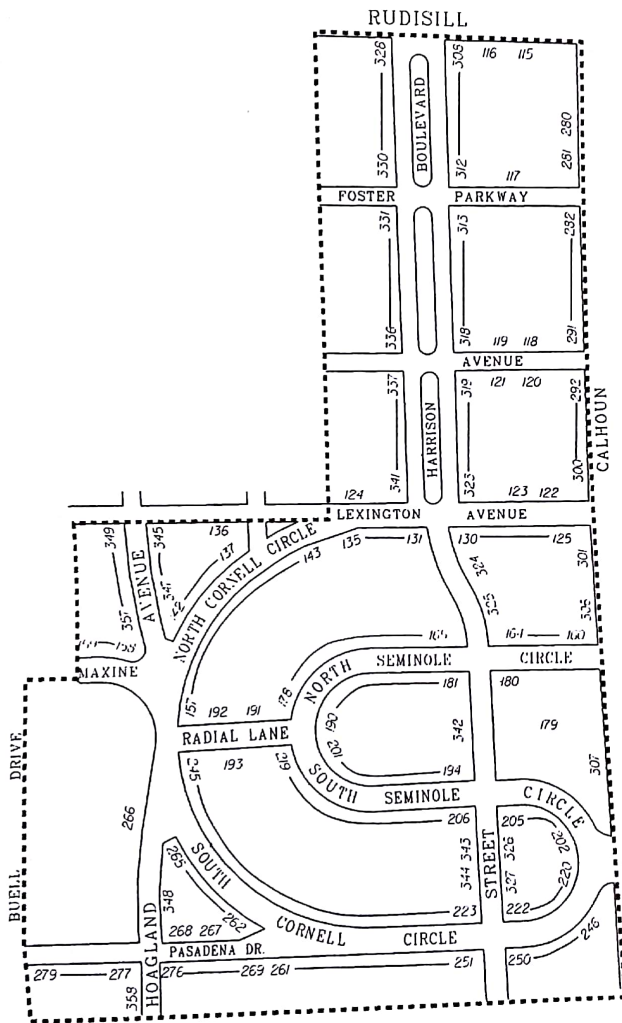
“This project has been funded in part by a Department of the Interior grant administered by the Division of Historic Preservation and Archeology, Indiana Department of Natural Resources.”

“This project receives Federal financial assistance for identification and protection of historic properties. Under Title VI of the Civil Rights Act of 1964 and Section 504 of the Rehabilitation Act of 1973, the U.S. Department of the Interior prohibits discrimination on the basis of race, color, national origin, or handicap in its federally assisted programs. If you believe you have been discriminated against in any program activity, or facility as described above, or if you desire further information, please write to: Office for Equal Opportunity, U.S. Department of the Interior, Washington, D.C. 20240.”

“This activity that is the subject of the Interim Report has been financed in part with Federal funds from the National Park Service, U.S. Department of the Interior. However, the contents and opinions do not necessarily reflect the views or policies of the Department of the Interior, nor does the mention of trade names or commercial products constitute endorsement or recommendation by the Department of the Interior.”

# Sector 43

## Harrison Hill Potential Historic District (003-215-43115/43358)



Harrison Hill is a planned residential development begun in 1915 by developers Frank Hilgeman and Albert Schaaf. The layout features a broad, landscaped boulevard and wide, curving streets designed for motor traffic; playground and park areas; paved streets and sidewalks; and brick entry markers. There is a wide variety of lot sizes and shapes to accommodate a range of houses. Constructed between 1915 and 1935, the houses encompass all early 20th century styles from modest bungalows to large Colonial and Tudor Revival style homes on the boulevard.

**No. Add. Description**

**W. Rudisill Blvd. (South Side)**

- 115 101 Tom's Super Valu Market; Neo-Tudor Revival, c.1975 (NC)
- 116 119 Apartment Building; Craftsman, c.1928 (N)

**W. Foster Parkway (North Side)**

- 117 116 House; Craftsman Bungalow, c.1925 (NC)

**W. Branning Ave. (North Side)**

- 118 112 Charles Knothe House; Craftsman Bungalow, c.1922 (C)
- 119 120 Phillip Miner House; American Foursquare, c.1918 (C)

**W. Branning Ave. (South Side)**

- 120 109 Wm. Wiebke House; Colonial Revival, c.1929 (C)
- 121 137 G. Adolph Schust House; Colonial Revival/Craftsman, c.1920 (C)

**Lexington Ave. (North Side)**

- 122 114 **Carl M. Myers House**; Craftsman, c.1920 (C)  
123 118 **House**; American Foursquare, c.1920 (C)  
124 220 **Carl Borkenstein House**; Colonial Revival, c.1925 (C)

**Lexington Ave. (South Side)**

- 125 117 **A. Verne Flint House**; Craftsman, c.1920 (C)  
126 121 **Frank Kaiser House**; Craftsman Bungalow, c.1920 (C)  
127 125 **R. Boyd Martin House**; Prairie/American Foursquare, c.1920 (C)  
128 129 **Harry Muller House**; Craftsman Bungalow, c.1922 (C)  
129 133 **Otto & Emma Klinkenberg House**; Craftsman, c.1920 (N)  
130 137 **Fred & Lottie Hoham House**; Prairie, c.1920 (N)  
131 201 **Daniel & Ethel Miller House**; Tudor Revival, c.1929 (N)  
132 209 **House**; Craftsman Bungalow, c.1918 (N)  
133 211 **George & Amy Fitzsimmons House**; Craftsman, c.1918 (N)  
134 217 **John & Nellie Smith House**; Craftsman, c.1920 (N)  
135 221 **Charles & Elizabeth Spencer House**; Craftsman Bungalow, c.1927 (N)  
136 339 **Albert Volz House**; American Foursquare, c.1928 (C)

**North Cornell Circle (North Side)**

- 137 302 **House**; Colonial Revival, c.1920 (C)  
138 306 **Rev. Edward & Lottie Johnson House**; Colonial Revival, c.1924 (N)  
139 310 **Joshua Miller House**; American Foursquare/Colonial Revival, c.1918 (C)  
140 314 **Carl Strobel House**; Colonial Revival, c.1926 (C)  
141 318 **Wilson & Effie Boucher House**; American Foursquare, c.1920 (N)  
142 330 **House**; Minimal Traditional, c.1955 (NC)

**North Cornell Circle (South Side)**

- 143 225 **House**; Colonial Revival/Bungalow, c.1928 (C)  
144 229 **James Clabaugh House**; American Foursquare/Eclectic, c.1924 (C)  
145 233 **Wendell Glass House**; Craftsman, c.1920 (C)  
146 237 **Maurice & Sophia Brubaker House**; Colonial Revival, c.1920 (N)  
147 241 **Robert & Hazel Burns House**; Craftsman, c.1920 (N)  
148 301 **House**; Craftsman, c.1918 (C)  
149 305 **House**; American Foursquare, c.1918 (C)  
150 309 **Fred & Catherine Stahl House**; American Foursquare/Craftsman, 1922 (Leighton Bowers, architect) (N)  
151 313 **Boyd & Neva Laser House**; Colonial Revival, c.1922 (N)

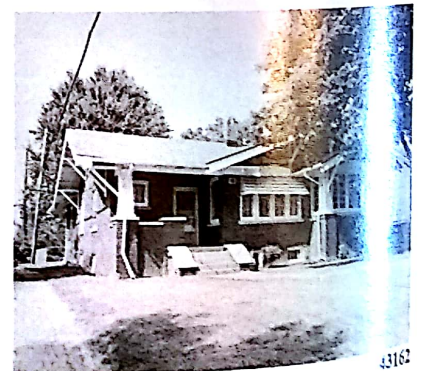
- 152 317 **George Mayer House**; American Foursquare, c.1920 (C)  
153 321 **Joseph Close House**; American Foursquare, c.1920 (C)  
154 325 **House**; Craftsman, c.1918 (C)  
155 329 **Erwin Fritz House**; Craftsman/Colonial Revival, c.1925 (C)  
156 333 **House**; Colonial Revival, c.1925 (C)  
157 337 **J. Edwin & Dorothy Gross House**; American Foursquare/Craftsman, c.1922 (N)

**Maxine Dr. (North Side)**

- 158 410 **Wm. Lahrman House**; Craftsman, c.1924 (C)  
159 412 **Lloyd Whelan House**; Craftsman Bungalow, c.1922 (C)

**North Seminole Circle (North Side)**

- 160 104 **Harry Enslen House**; Craftsman Bungalow, c.1920 (C)  
161 108 **Albert Bowers House**; Craftsman Bungalow, c.1918 (C)



- 162 112 **Trygve & Mabel Storm House;** Craftsman Bungalow, c.1918 (N)
- 163 118 **Leonard Brown House;** American Foursquare, c.1920 (C)
- 164 120 **Fred Harber House;** Craftsman, c.1920 (C)
- 165 206 **Harold Broxon House;** Colonial Revival, c.1922 (C)
- 166 210 **Harry Thomas House;** American Foursquare, c.1920 (C)
- 167 214 **Floyd Neff House;** Colonial Revival/Craftsman, c.1920 (C)
- 168 218 **Roswell Miller House;** Craftsman, c.1918 (C)
- 169 222 **James Geiger House;** American Foursquare, c.1918 (C)
- 170 226 **Lambert & Marie Fowler House;** Craftsman/Tudor Revival, c.1924 (N)
- 171 230 **Elva McDaniel House;** Colonial Revival, c.1927 (C)
- 172 234 **Charles F. Smith House;** American Foursquare/Prairie, c.1924 (C)
- 173 238 **Lisle Gable House;** Colonial Revival, c.1924 (C)
- 174 302 **Albert Pape House;** Dutch Colonial Revival, c.1924 (C)
- 175 306 **Joseph Luyben House;** Colonial Revival, c.1922 (C)
- 176 310 **Alfred Gremel House;** Colonial Revival, c.1927 (C)
- 177 314 **Louis Hull House;** Colonial Revival/Craftsman, c.1920 (C)

- 178 318 **House;** Minimal Traditional, c.1940 (C)

**North Seminole Circle (South Side)**

- 179 NA **Vacant lot;** (NC)
- 180 129 **Edwin C. Moellering House;** American Foursquare, c.1916 (C)
- 181 201 **August Grodrian House;** American Foursquare/Craftsman, c.1918 (C)
- 182 205 **House;** Tudor Revival, c.1940 (C)
- 183 209 **Harold Covert House;** Craftsman, c.1920 (C)
- 184 213 **Robert Keller House;** Colonial Revival, c.1920 (C)
- 185 219 **Lundy Welborn House;** Dutch Colonial Revival, c.1922 (C)
- 186 221 **Lawrence Meily House;** Craftsman, c.1918 (C)
- 187 225 **Henry Reynolds House;** Craftsman, c.1918 (C)
- 188 309 **Timothy Knisely House;** Dutch Colonial Revival, c.1922 (C)
- 189 313 **House;** Craftsman, c.1916 (C)
- 190 321 **Alvin Berning House;** Colonial Revival, c.1922 (C)

**Radial Lane (North Side)**

- 191 310-312 **Duplex;** Craftsman Bungalow, c.1920 (C)
- 192 334 **Arthur Hinckley House;** Colonial Revival, c.1922 (C)

**Radial Lane (South Side)**

- 193 329 **H. Lloyd Grosvenor House;** Colonial Revival/Craftsman, c.1922 (C)

**Seminole Circle South (North Side)**

- 194 206 **Somers-Ruhl House;** Craftsman, c.1920 (C)
- 195 212 **House;** American Foursquare, c.1916 (C)
- 196 216 **Otto Piepenbrink House;** Colonial Revival, c.1925 (C)
- 197 220 **Leonard Smith House;** Craftsman, c.1920 (C)
- 198 224 **Edward Harber House;** American Foursquare, c.1920 (C)
- 199 228 **Clement Schnieders House;** American Foursquare, c.1920 (C)
- 200 308 **James Henry House;** Dutch Colonial Revival, c.1923 (N)
- 201 320 **Harry Cox House;** Colonial Revival/Craftsman, c.1920 (C)

**Seminole Circle South (South Side)**

- 202 103 **Frank Zollars House;** Colonial Revival, c.1922 (C)
- 203 107 **Nathan & Myrtle Shine House;** Craftsman, c.1920 (N)
- 204 115 **Daniel Fox House;** Colonial Revival, c.1925 (C)
- 205 119 **Harold Feistkorn House;** American Foursquare, c.1920 (C)
- 206 207 **Robert Graffe House;** Craftsman, c.1918 (C)
- 207 211 **Forest Klute House;** Craftsman, c.1918 (C)

- 208 215 **George Waldschmidt House;** Craftsman, c.1920 (C)
- 209 219 **Robert Langston House;** American Foursquare, c.1920 (C)
- 210 223 **Hollis & Esther Logue House;** Colonial Revival/Craftsman, c.1922 (N)
- 211 227 **Earl Achenbach House;** American Foursquare/Craftsman, c.1918 (C)
- 212 231 **John Reynolds House;** Craftsman, c.1920 (C)
- 213 303 **Roy Young House;** American Foursquare/Colonial Revival, c.1925 (C)
- 214 307 **Benjamin Null House;** American Foursquare, c.1920 (C)
- 215 311 **Linus Johnson House;** American Foursquare, c.1920 (C)
- 216 315 **House;** Craftsman, c.1917 (N)
- 217 319 **Adolph Muntzinger House;** American Foursquare, c.1918 (C)
- 218 323 **Lester Armstrong House;** Craftsman Bungalow, c.1918 (C)
- 219 327 **Rev. Frank & Anna Rupnow House;** American Foursquare/Craftsman, c.1918 (N)
- S. Cornell Circle (North Side)**
- 220 102 **House;** Ranch, c.1955 (NC)
- 221 124 **M. Ralph & Dorothy Stark House;** Prairie, c.1920 (N)
- 222 126 **Otis Nusbaum House;** Colonial Revival, c.1920 (C)
- 223 204 **Irelan Lee House;** Colonial Revival, c.1920 (C)
- 224 208 **Wilfred North House;** Colonial Revival, c.1924 (C)
- 225 212 **House;** Colonial Revival-Cape Cod, c.1949 (NC)
- 226 216 **Mrs. Emma Ward House;** Craftsman Bungalow, c.1925 (C)
- 227 220 **Carl Borkenstein House;** Craftsman, c.1920 (C)
- 228 226 **House;** Colonial Revival, c.1949 (NC)
- 229 228 **House;** Colonial Revival/Craftsman, c.1918 (C)
- 230 232 **House;** Craftsman, c.1918 (C)
- 231 304 **James Little House;** Colonial Revival, c.1920 (C)
- 232 310 **House;** Colonial Revival, c.1940 (C)
- 233 312 **House;** Colonial Revival, c.1940 (C)
- 234 316 **August Hirshman House;** American Foursquare, c.1920 (C)
- 235 320 **House;** American Foursquare, c.1918 (C)
- 236 324 **Robert Snyder House;** Craftsman, c.1920 (C)
- 237 328 **Aubrey House;** American Foursquare, c.1920 (C)
- 238 334 **House;** Colonial Revival, c.1940 (C)
- 239 336 **House;** Craftsman, c.1920 (C)
- 240 340 **Samuel Grossman House;** Colonial Revival, c.1920 (C)
- 241 344 **House;** Tudor Revival/Colonial Revival, c.1930 (N)
- 242 348 **House;** French Eclectic, c.1935 (C)
- 243 352 **House;** American Foursquare, c.1920 (NC)
- 244 356 **Charles Allen House;** Craftsman Bungalow, c.1920 (C)
- 245 360 **House;** Craftsman, c.1920 (C)
- S. Cornell Circle (South Side)**
- 246 119 **House;** American Foursquare, c.1920 (C)
- 247 123 **Ralph Dunkelberg House;** Colonial Revival, c.1925 (C)
- 248 127 **John & Vera Kenney House;** Craftsman, c.1920 (O)
- 249 135 **Fred Jackson House;** Colonial Revival, c.1927 (C)
- 250 141 **House;** Colonial Revival, c.1930 (C)
- 251 203 **Herman Sigrist House;** American Foursquare/Colonial Revival, c.1920 (C)



43240



43248

- 252 209 Robert Martin House; Colonial Revival, c.1920 (C)
- 253 211 Victor Miller House; American Foursquare, c.1922 (C)
- 254 215 Charles Wells House; Craftsman Bungalow, c.1920 (C)
- 255 219 Frederick Brown House; Dutch Colonial Revival, c.1924 (C)
- 256 223 John Roebel House; American Foursquare, c.1920 (C)
- 257 227 Harry Haller House; Colonial Revival, c.1920 (C)
- 258 303 Mathew Rasmus House; Colonial Revival, c.1924 (C)
- 259 307 Horace Ellenwood House; American Foursquare/Craftsman, c.1920 (C)
- 260 311 Roy Haines House; Colonial Revival/Craftsman, c.1927 (C)
- 261 315 House; Colonial Revival, c.1918 (C)
- 262 327 House; Tudor Revival, c.1935 (N)
- 263 335 House; American Foursquare/Prairie, c.1915 (C)
- 264 337 House; Craftsman, c.1915 (C)

- 265 343 Leo Mascotte House; Dutch Colonial Revival, c.1927 (N)
- 266 355 Harrison Hill Elementary School; Craftsman/Prairie, 1924 (Charles Weatherhogg, architect; Indiana Engineering & Construction Co., builders) (O)

Pasadena Dr. (North Side)

- 267 342 George Patterson House; American Foursquare, c.1920 (C)
- 268 348 Oscar Miller House; Colonial Revival, c.1924 (C)

Pasadena Dr. (South Side)

- 269 319 John Distel House; Craftsman, c.1920 (C)
- 270 323 Walter Kennedy House; Craftsman, c.1920 (C)
- 271 325 Olin Parker House; Colonial Revival, c.1925 (C)
- 272 329 James Nolan House; Colonial Revival, c.1924 (C)
- 273 333 Wm. J. Riebs House; Craftsman, c.1922 (C)
- 274 337 Volney Tuttle House; American Foursquare/Craftsman, c.1920 (C)
- 275 343 Kirby Baker House; American Foursquare, c.1920 (C)
- 276 345 Clyde Durbin House; Craftsman, c.1922 (C)
- 277 405 House; Craftsman Bungalow, c.1928 (C)
- 278 409 House; Minimal Traditional, c.1948 (NC)

- 279 413 House; Minimal Traditional, c.1948 (NC)

S. Calhoun St. (West Side)

- 280 3932 House; American Foursquare/Craftsman, c.1915 (C)
- 281 3936 Commercial Building; Ranch, c.1955 (NC)
- 282 4006-4008 Duplex; Colonial Revival, c.1940 (NC)



43283

- 283 4010 Duplex; Tudor Revival, c.1925 (N)
- 284 4014 House; American Foursquare, c.1918 (C)
- 285 4018 House; Craftsman, c.1915 (C)
- 286 4022 Walter Turner House; Craftsman Bungalow, c.1920 (C)
- 287 4026 House; Craftsman, c.1918 (C)
- 288 4030 House; American Foursquare, c.1915 (C)
- 289 4102 House; American Foursquare, c.1916 (C)
- 290 4106 John Palmer House; American Foursquare, c.1920 (C)

- 291 4110 House; Craftsman Bungalow, c.1922 (NC)
- 292 NA Vacant lot; (NC)
- 293 4120 House; American Foursquare, c.1916 (C)
- 294 4122 House; Ranch, c.1955 (NC)
- 295 4126 House; American Foursquare, c.1916 (C)
- 296 4202 John Swanson House; Colonial Revival/Craftsman, c.1925 (C)
- 297 4208 House; Minimal Traditional, c.1945 (NC)
- 298 4210 Jacob & Mary Junk House; American Foursquare, c.1916 (N)
- 299 4214 House; American Foursquare, c.1916 (C)
- 300 4220 Fred Dressel House; Craftsman, c.1924 (C)
- 301 4230 Penn-Marr Petroleum Co. Filling Station; Craftsman/Art Deco, c.1927 (C)



43303

- 302 4232 Dale Drug Store Building; Craftsman/Functional Commercial, c.1927/c.1955 (NC)
- 303 4236 Farling-Fletcher Grocery Store Building; Colonial Revival, c.1925 (N)
- 304 4238 Great A&P Tea Co. Building; Craftsman/Art Deco, c.1928 (N)
- 305 4242 House; Queen Anne/Gabled Ell, c.1890 (N)
- 306 4314 House; Craftsman, c.1915 (NC)



43307

- 307 4426 Wm. H.F. Moellering House; American Foursquare, c.1905 (O)

S. Harrison Blvd. (East Side)

- 308 NA Harrison Hill Entrance Markers; Craftsman, 1915 (C) (At S. Harrison Blvd. and W. Rudisill Blvd.-south side)
- 309 3905 House; Ranch, c.1950 (C)
- 310 3919 Wilfred North House; Tudor Revival, c.1928 (O)
- 311 3927 Edward J. Higgins House; Colonial Revival, c.1928 (N)

- 312 3939 L.R. & Irma Lepird House; Prairie, c.1920 (N)
- 313 4003 Hall-Wallace House; Craftsman/American Foursquare, 1916 (N)
- 314 4011 Arthur & Mabel Redderson House; Colonial Revival, c.1920 (N)
- 315 4017 J. Karl Jurgensen House; Prairie/Craftsman, c.1920 (C)
- 316 4021 Fred Reynolds House; Colonial Revival, c.1925 (C)
- 317 4029 Edward & Matilda Scheumann House; Colonial Revival, c.1925 (N)
- 318 4035 House; French Eclectic, c.1930 (N)
- 319 4101 House; Ranch, c.1958 (NC)
- 320 4109 Clement Hartman House; Tudor Revival, c.1930 (N)
- 321 4117 Ernest & Selma Galmeyer House; Colonial Revival, c.1925 (N)
- 322 4129 House; Colonial Revival, c.1935 (C)
- 323 4135 Ross-Kraus House; Colonial Revival, c.1923 (A.M. Strauss, architect) (O)



43323



S. Harrison St. (East Side)

- 324 4219 Fred Uebelhoer House; American Foursquare, c.1918 (C)  
325 4221 Louis Pike House; Colonial Revival/Craftsman, c.1922 (C)  
326 4415 House; Tudor Revival, c.1928 (C)  
327 4421 Wm. Wolf House; Colonial Revival, c.1925 (C)

S. Harrison Blvd. (West Side)

- 328 3906 Grace-McMillen House; Mission/Prairie, c.1915 (O)  
329 3924 Mark Schulz House; Neoclassical, c.1915 (O)  
330 3940 Albert Schaaf House; Colonial Revival, c.1920 (O)  
331 4002 House; Ranch, c.1950 (C)  
332 4010 Hugh & Nellie Jeffrey House; Prairie/American Foursquare, c.1920 (N)  
333 4018 Louis Ridgway House; American Foursquare, c.1920 (C)  
334 4024 Frank & Ethel Mills House; Dutch Colonial Revival, c.1925 (N)  
335 4030 Nelson & Ethel Pollak House; Spanish Eclectic, c.1931 (A.M. Strauss, architect) (O)  
336 4040 House; Tudor Revival/Colonial Revival, c.1925 (C)  
337 4102 Nathan & Myrtle Shine House; French Eclectic, c.1930 (O)  
338 4112 Dr. Marshall B. & Ethel Catlett House; Colonial Revival, c.1922 (N)

- 339 4118 Maurice Brubaker House; Tudor Revival, c.1928 (N)  
340 4120 Ervin & Mary Zern House; Spanish Eclectic, c.1925 (O)  
341 4138 House; Colonial Revival, c.1930 (C)  
S. Harrison St. (West Side)  
342 4330 Harley & Etna Somers House; Colonial Revival, c.1927 (N)  
343 4412 House; Craftsman Bungalow, c.1918 (C)



- 344 4422 Henry Cohen House; Craftsman, c.1920 (C)  
Hoagland Ave. (East Side)  
345 4201 House; Craftsman, c.1918 (C)  
346 4205 House; Craftsman Bungalow, c.1918 (C)  
347 4209 House; Craftsman Bungalow, c.1918 (C)  
348 4421 House; American Foursquare/Colonial Revival, c.1918/c.1945 (C)

Hoagland Ave. (West Side)

- 349 4202 Joseph Towns House; Craftsman/Colonial Revival, c.1923 (C)  
350 4206 House; Craftsman, c.1918 (C)  
351 4210 House; Craftsman Bungalow, c.1928 (C)  
352 4214 House; Tudor Revival, c.1930 (C)  
353 4218 Troy Rudy House; American Foursquare, c.1918 (C)  
354 4222 Harry Kesterson House; American Foursquare, c.1925 (C)  
355 4226 House; Craftsman Bungalow, c.1920 (C)  
356 4232 Grover Orr House; Craftsman, c.1920 (C)  
357 4234 J. Russell Schrom House; Dutch Colonial Revival, c.1924 (C)  
358 4502 House; Colonial Revival, c.1930 (NC)